



Puri Chem
Integrated Water Systems

مكين
التكامل للحياة



Who Are We?

Who We Are?

- ✓ PuriChem is an engineering company specialized since 2007 in design and implementation of integrated water and wastewater treatment systems for various applications in industry and municipalities.
- ✓ PuriChem evolved throughout 17 years of extensive knowledge and well earned experience to become a full stack engineering and construction company providing its services in Egypt and overseas in the industrial sector; proving to be competent in civil, architecture, mechanical and electrical and chemical engineering and construction.



Who We Are?

- ✓ We pride ourselves as one of the leaders in the industry; providing the latest technology and equipment allowing us to give our clients the best service possible on-site and through other media.
- ✓ Projects engineered and executed by PuriChem are implemented using the latest, cutting-edge techniques and methodologies, ensuring optimal efficiency and innovation.

Who We Are?

- ✓ **In every project, we prioritize sustainable practices, integrating solutions that reduce environmental impact and promote the reuse of resources. Our commitment extends to minimizing waste, conserving water, and utilizing energy-efficient technologies, helping to create a more sustainable future.**

ABOUT US

Entities

ESTABLISHED
2007

Egypt

Administrative Office
Engineering Office and
Workshop

PuriChem
Integrated Water Systems

C W E P 0 1 9 7

Compass Building, Al Shohada Road,
Al Hamra Industrial Zone-FZ,

Ras Al Khaimah



UAE

KSA

إدارة البادية البيضاء

Al Dar Al Baida District,
Riyadh



PuriChem
Integrated Water Systems

Our Business Partners

GRUNDFOS 



OTT GROUP

 **MITSUBISHI CHEMICAL**
AQUA SOLUTIONS

MUTAG




Endress+Hauser
People for Process Automation

FLOWTECH
— ENVIRONMENTAL SOLUTIONS —

KENDENSHA

REKO

VODATECH



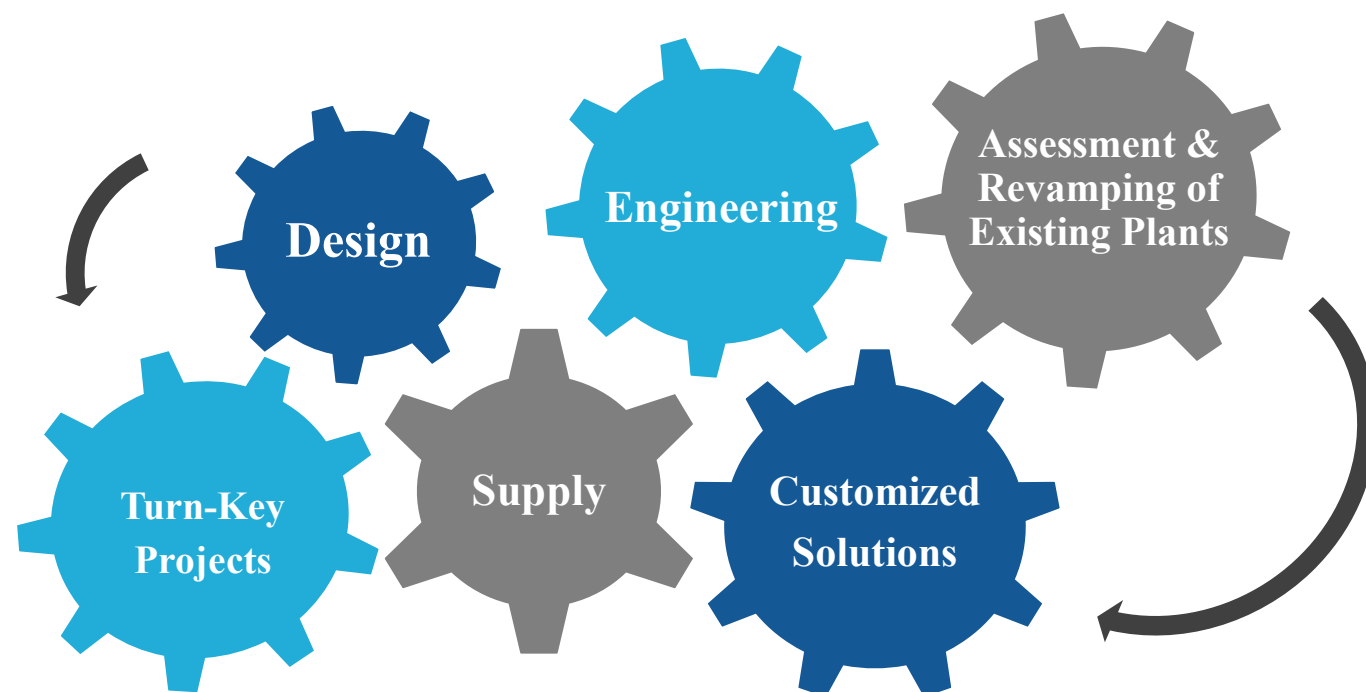

The logo for Mawlin, featuring the word 'مولين' in Arabic and 'التكامل للمياه' (Integration for Water) below it.

PuriChem
Integrated Water Systems



Scope of Work

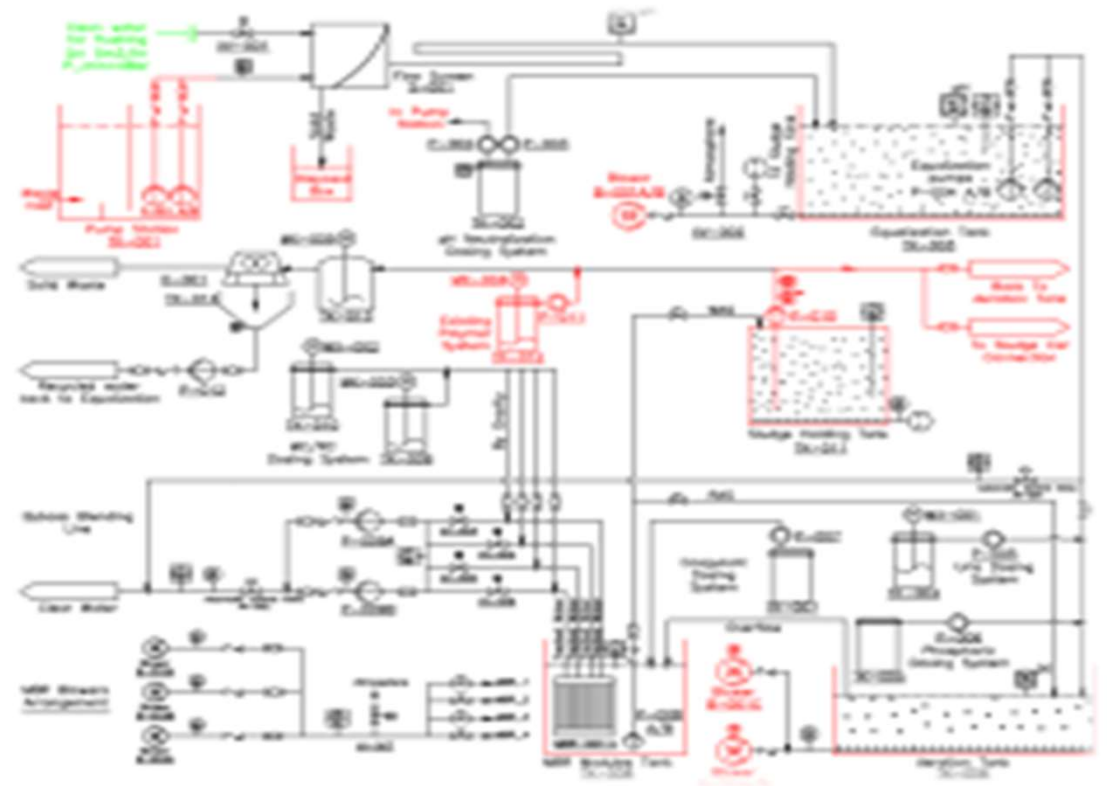
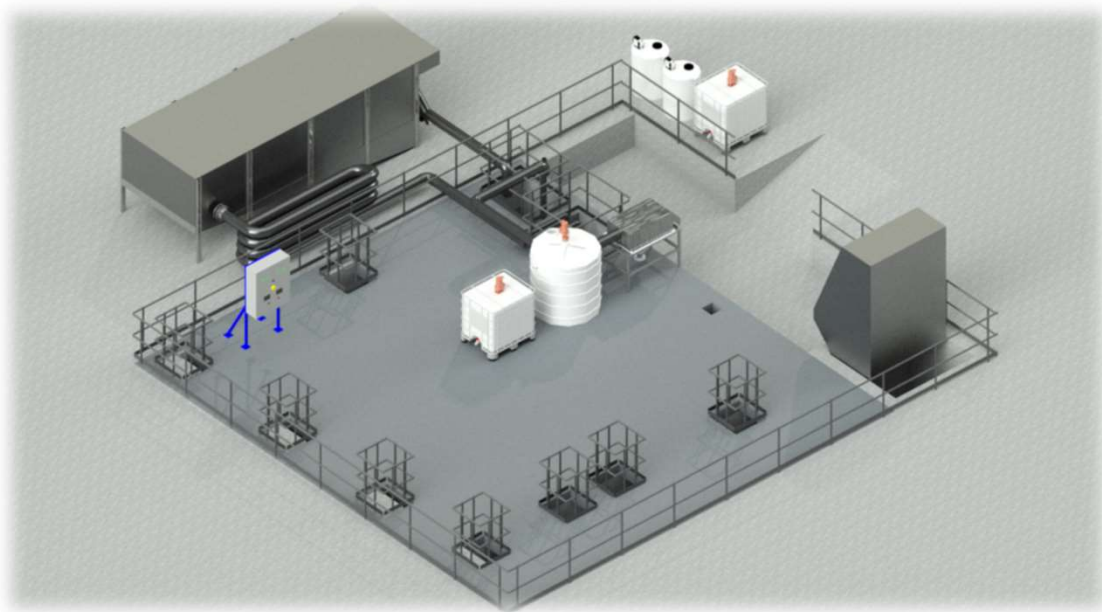
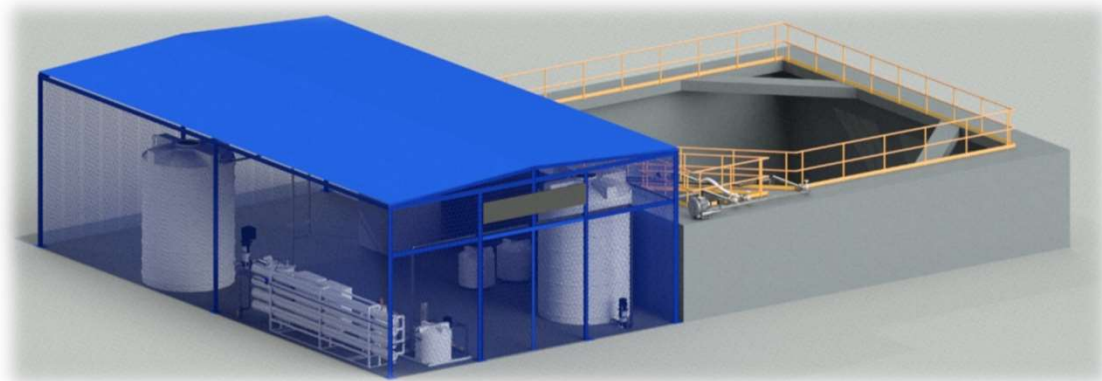
Capabilities



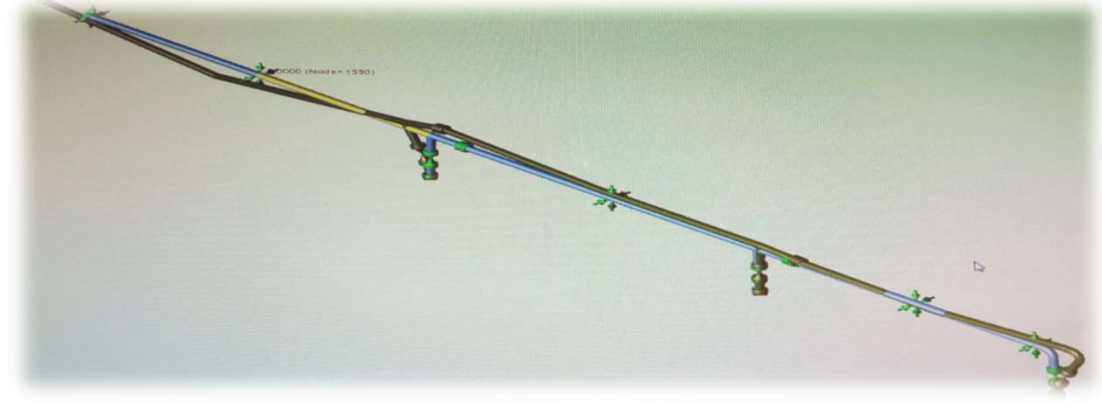
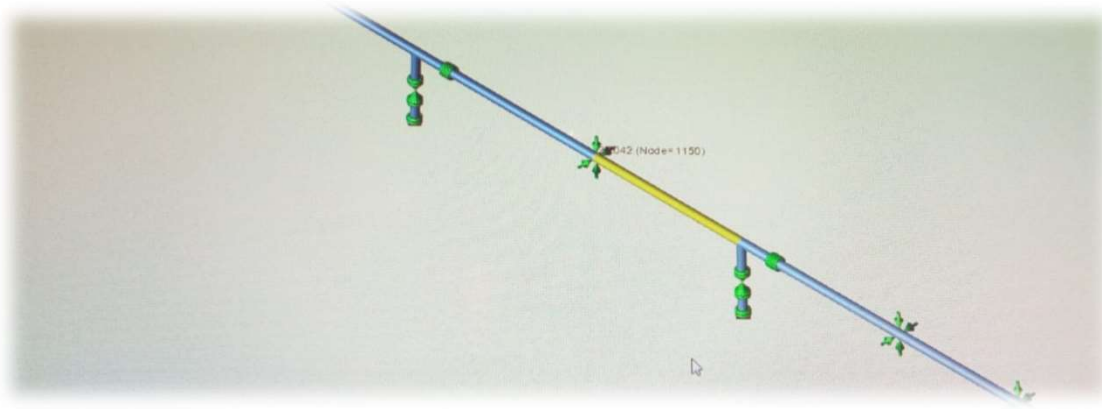
Design and Engineering

- ✓ **Dedicated Design and Engineering Team**
- ✓ **Customized and Tailor-Made Designs**
- ✓ **Special Designs for challenging quality or footprint**
- ✓ **State of the art Engineering packages and 3D Models**
- ✓ **Latest technologically advanced and energy efficient Equipment selection taking into consideration projects CAPEX and OPEX challenges**

Design and Engineering



Design and Engineering



Execution

- ✓ **Qualified Site Teams**
- ✓ **Following HSE Regulations for the most safe and productive site conditions**
- ✓ **Standard Materials of construction and Supporting philosophies**
- ✓ **Qualified subcontractors**
- ✓ **In-house Power and Automation Panels including all programming and HMI interfaces**

Execution



Execution



Execution



Execution





Workshops

Workshops Areas

#	Length	Width	Area
Workshop 1	44 m	13.30 m	585 m ²
Workshop 2	93.45 m	13.50 m	1261.50 m ²
Workshop 3	12 m	13.50 m	162 m ²
Workshop 4	12 m	13.50 m	162 m ²
Workshop 5	12 m	13.50 m	162 m ²
Workshop 6	12 m	13.50 m	162 m ²



Workshops Activities

- **Manufacture and installation of Tanks and Pressure Vessels**



Workshops Activities

- **Manufacture and installation of Metallic Steel Structures**



Manufacture and installation of Piping





Industrial Construction

Who We Are?

- ✓ **PuriChem has acquired industry knowledge and experience and talents that makes it fair to be called a “rising star” in the Industrial Construction Sector.**
- ✓ **Our team is comprised of experienced talents in the various engineering disciplines with wide array of knowledge and tools in industrial construction and with an extensive experience in the field.**
- ✓ **Our Project Management techniques and tools allow us to deliver any given project at the utmost quality, meeting project schedules and budgets.**



Who We Are?

- ✓ **QHSE: We strive to have the highest standards in quality management, health, safety and environmental standards. PuriChem implements the highest standards and is in a continuous improvement process in order to maintain our clients' requirements and ultimately their satisfaction.**



Civil and Structure

Piping Installations

- Including all types of materials
- Heavy and special lifts study
- Control quality and required report
- Support design and installation
- Under ground, above ground or inside basin networks



Steel Structures and Platform Installations

- Platform, grating, ladders and handrail for walkways and any access point.



Equipment installation

- Lifting works for Heavy and light equipment
- Installing equipment over platforms and intermediate floors
- Equipment assembly according to vendor drawings



Insulation, blasting and painting

- **Fiberglass Insulation**
- **Foam Rubber Insulation**
- **Polyethylene Foam Insulation**
- **Mineral Wool (Rock Wool) Insulation**
- **Sand Blasting**
- **All types of Paintings**



Civil Engineering

- Steel and concrete structures design and construction.
- Deep and shallow foundations design and construction.
- Dewatering and shoring techniques.
- Infrastructure excavation and pipe/cable laying techniques.

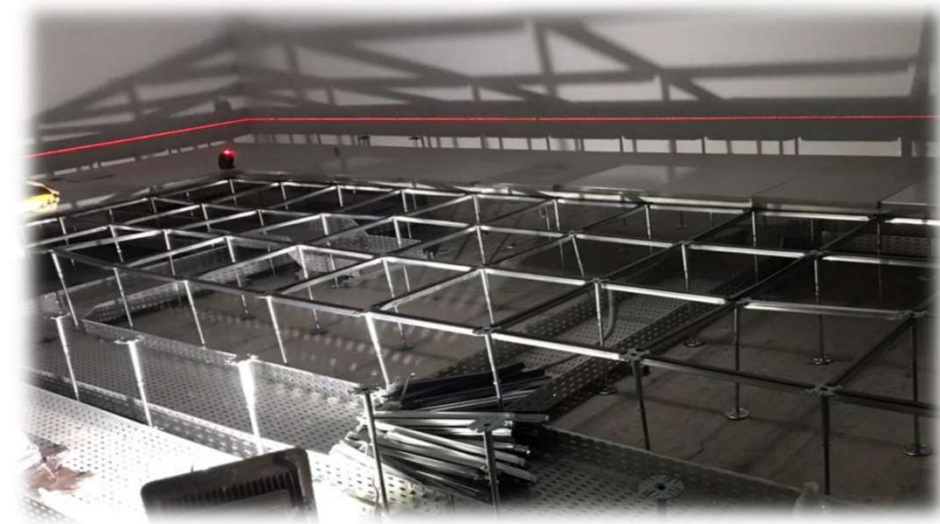


Civil Engineering



Industrial Buildings MEP

- HVAC
- Firefighting and Fire Alarm systems
- Industrial Interior Finishing (Raised Floors, Epoxy flooring, False ceilings)
- Insulation and water proofing systems
- Fire-Rated steel and wooden Doors



Electrical Networks

- Distribution Panels building and installation
- MV/LV Equipment Installation
- LV Cables and Conduits, Power & Lighting Installation

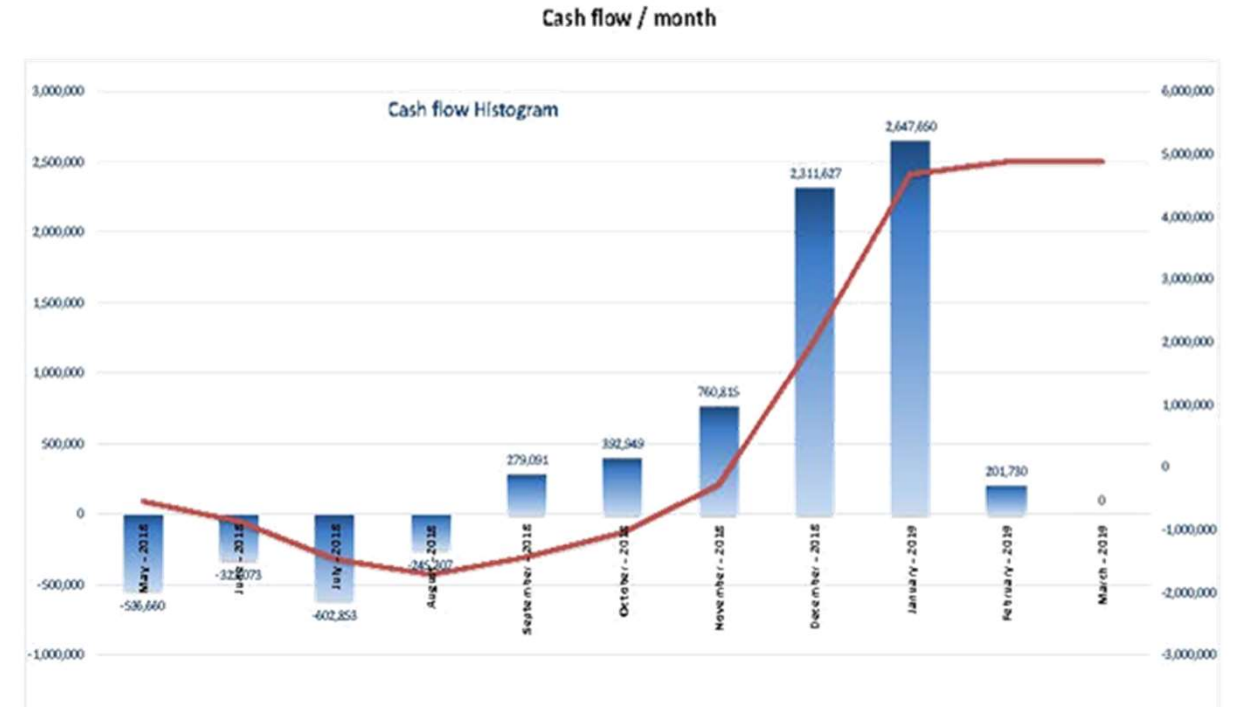
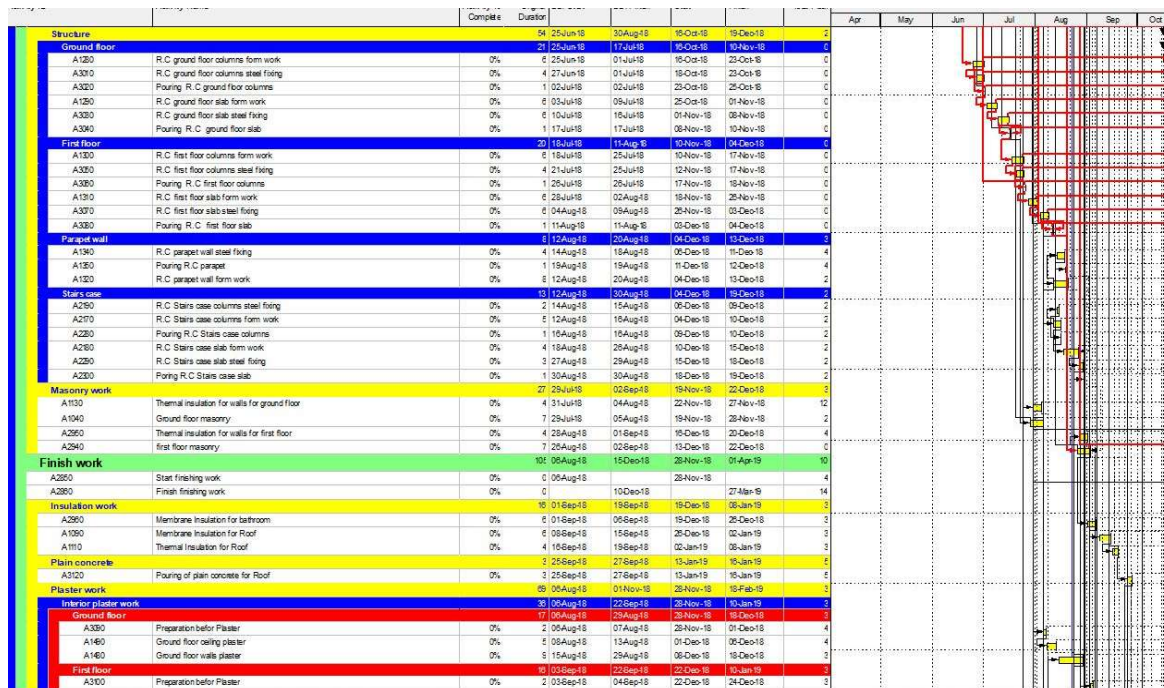




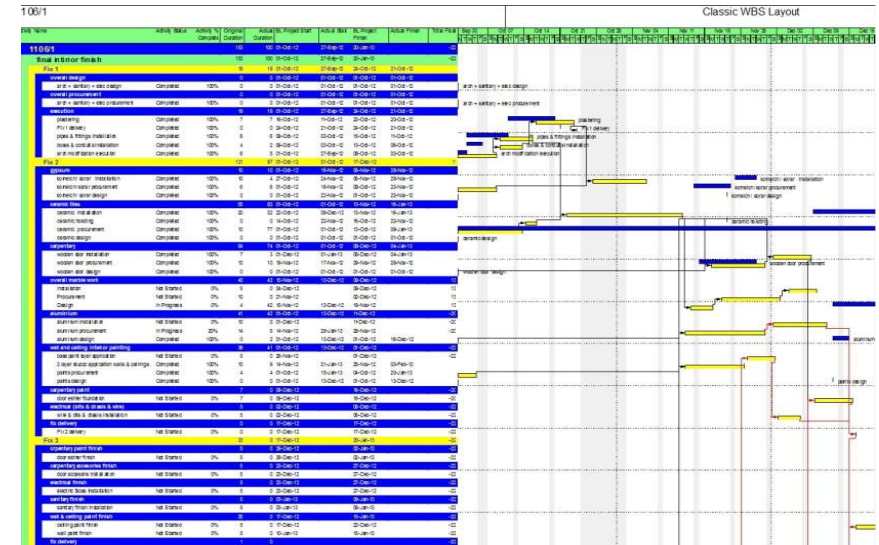
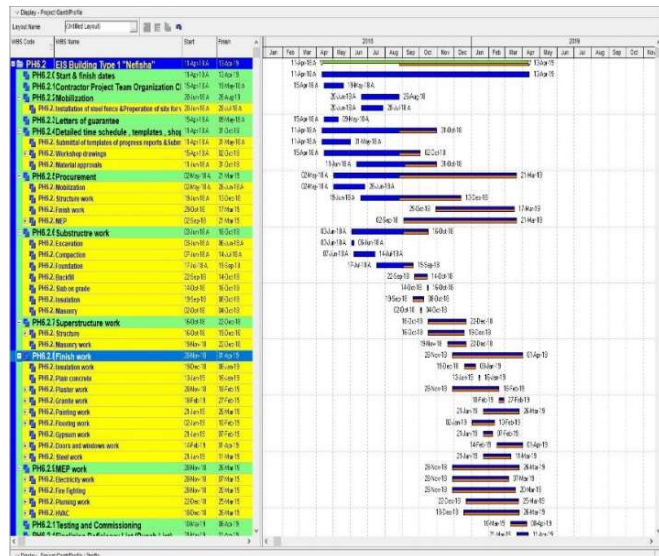
Project Management

Planning for Successful Delivery

- Accurate time and cost estimations
- Time planning using CPM, LOB
- Resource Planning and Levelling



- **Risk analysis , elimination & mitigation**
- **Real-time schedule analysis and control**





Wastewater treatment and Reuse Plants

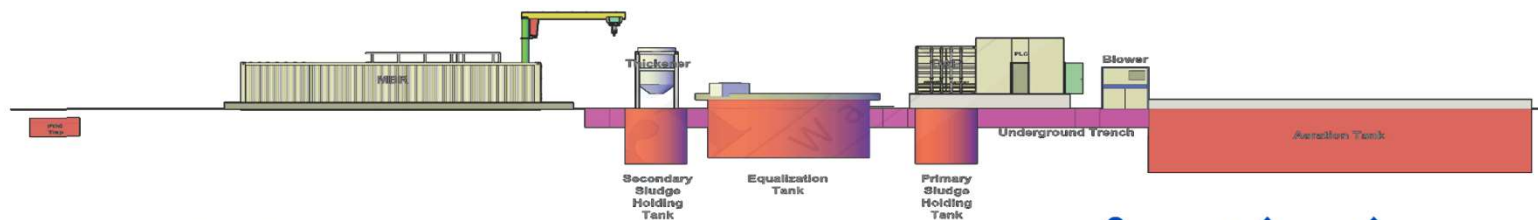
Wastewater treatment and Reuse Plants

- ✓ **Industrial & Domestic Wastewater Treatment Plants & Revamping/ Upgrade of Existing IWWTP.**
- ✓ **Reuse of Wastewater to Maximize Recovery, & Energy Optimization**
- ✓ **Optimizing reused water % mainly based on Energy Efficiency, Process Reliability & Cost Effectiveness.**
- ✓ **In the following slides, a glimpse of our Wastewater treatment and Reuse Projects will be shown**

Mondelez BEA Industrial Wastewater Treatment Plant

Subcontractor to NALCO Water

- Discharged water quality matches the stander disposal limits in the Egyptian Law.
- Ultra-pure produced treated water suitable for further reuse.
- Capacity: 60,000 litter/day.



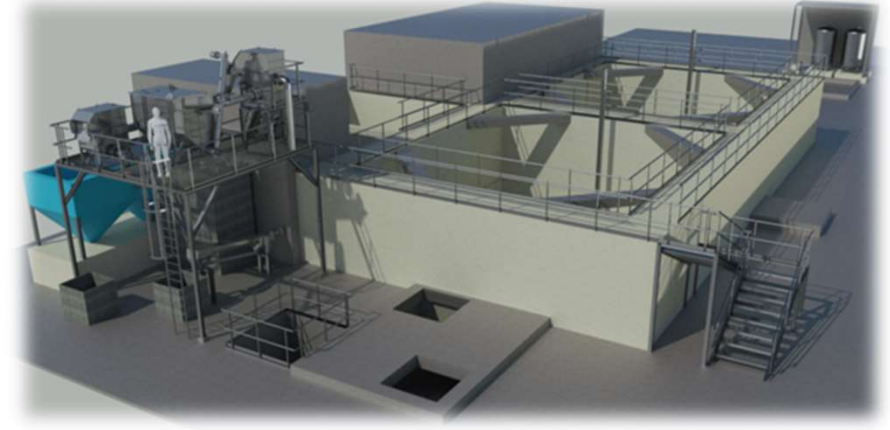
Wastewater
before
treatment



Product
water after
treatment

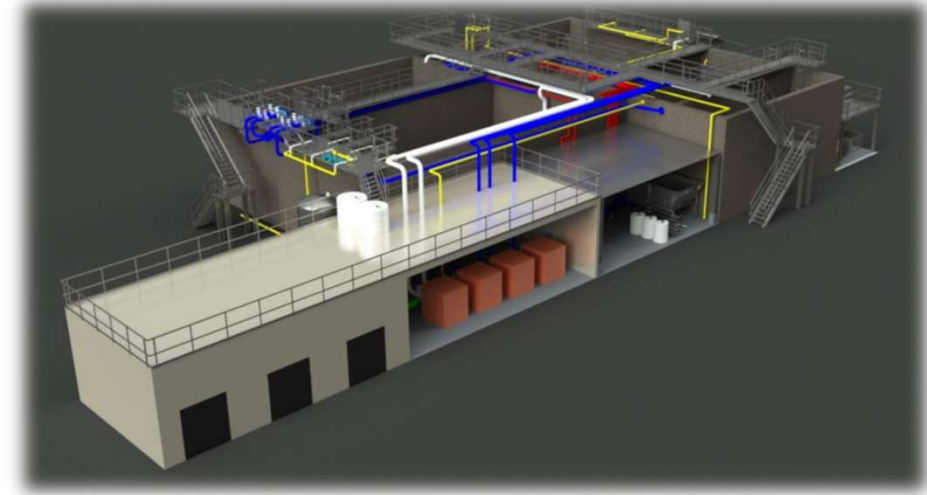
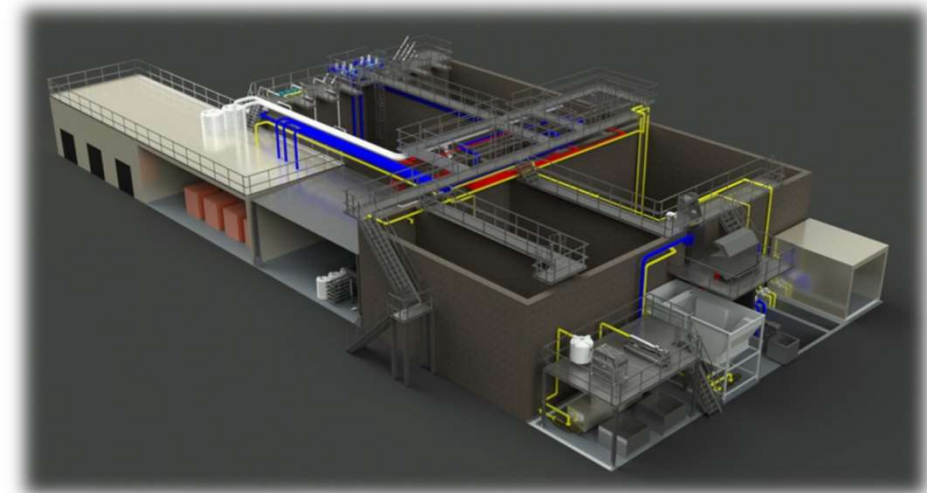
Chipsy Assuit Industrial WWTP Upgrade

- Industrial wastewater treatment plant revamping and upgrade.
- The produced water matches the Egyptian laws for advanced treated water reuse in irrigation.
- Capacity: 600 m³/day
- 600 m of Piping, Physical and Biological Treatment Equipment Installed



Chipsy Amoun IWWTP 1050 CMD with Future Reuse

- A state-of-the-art IWWTP with capacity 1050 m³/d designed based on 2 Stage Biological Treatment Processes (MBBR-advanced UF-MBR) to be able to meet strict governmental regulations as well as future reuse phase.
- Capacity: 1,050 m³/day



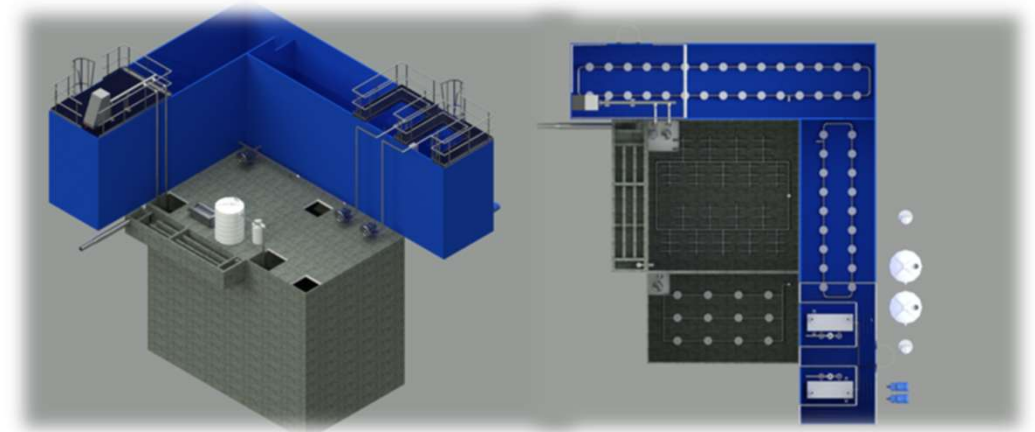
Agthia Industrial Wastewater Treatment Plant

- Industrial wastewater treatment plant designed to produce water with quality matching Egyptian standards for wastewater discharge
- Capacity: 1,000 m³/day
- Physio-Chemical Separation Process



Al Galala Compact Advanced Sewage Treatment Plant (iMBR)

- Advanced sewage treatment plant is designed to treat municipal wastewater for reuse in irrigation.
- The submersible ultra-filtration technology produce water with high quality that matches the the Egyptian laws for advanced treated water reuse in irrigation of fruitful trees.
- Capacity: 500 m³/day



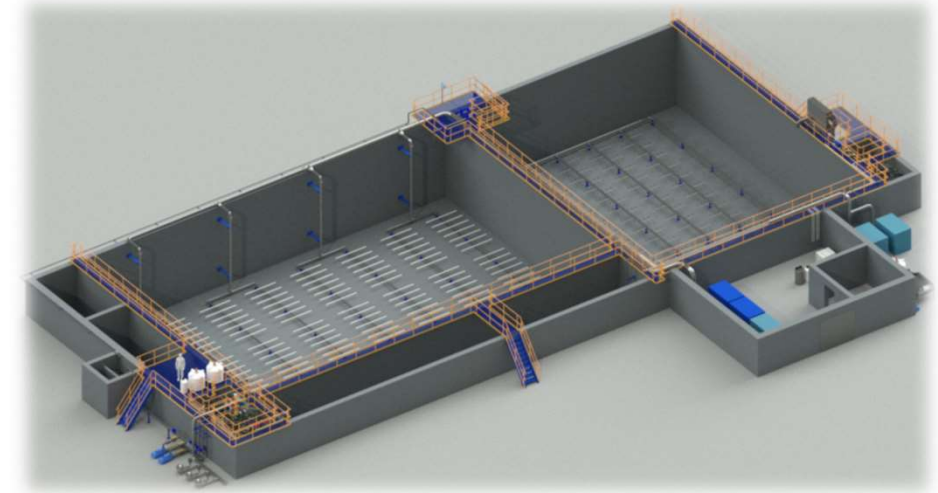
Chipsy New Advanced Industrial Wastewater Aeration System

- PuriChem re-designed old aeration system to new advanced industrial wastewater aeration system
- The integrated design was able to achieve the main goal of the project to enhance aeration efficiency with proven energy savings, reduced carbon emissions, and lower maintenance cost.
- Capacity: 2,000 m³/day



Pepsi October Industrial WWT & Reuse Plant

- The retrofit of the IWWTPs with capacity 1600 m³/d re-designed based on advanced MBR biological treatment to be able to meet more strict governmental regulations as well as prepare for partial reuse opportunities.
- Capacity: 1,600 m³/day



Visual Results and Sample Analysis



Inlet COD
2900 mg/l

MLSS
5050 mg/l

Outlet COD
45 mg/l

National Research Centre
Analysis and consultation unit
Domain of Evaluation and
Remediation of Hazardous Solid
Wastes

المركز القومي للبحوث
وحدة التحليل والاستشارات
المجال الاستشاري لتقييم ومعالجة المخلفات الصلبة
الخطرة

نتائج تحليل العينة الواردة من شركة بيوريكم لصالح شركة بيبسي
(مصنع الساس من أكتوبر)

Date: 3/4/2023

Parameters	Units	Results	Law 93/1962&Ministerial Decree 44/2000
pH	--	7.48	6-9.5
Total suspended solids	mg/l	3.4	800
Total dissolved solids	mg/l	1057	--
Chemical oxygen demand	mgO ₂ /l	12	1100
Biochemical oxygen demand	mgO ₂ /l	<5	600
Settleable solids	10' ml/l	N.D	8
	30' ml/l	N.D	15
Total sulfides	mg/l	N.D	10
Total Kjeldahl nitrogen	mg/l	4.48	100
Total phosphors	mg/l	0.9	25
Oil and grease	mg/l	N.D	100

Sample was collected by the authorized person from the company
* N.D: Not detected

Prof. Dr. Enas Abou Taleb
Enas Aboutaleb
Prof of Wastewater Treatment
Technology and Environmental Studies

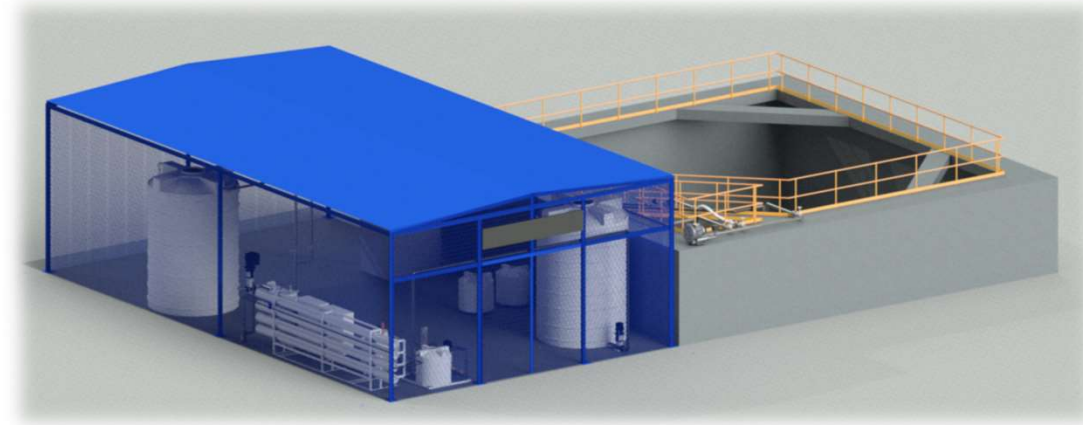
Head of Domain
Hanan Sayed
Prof. Dr. Hanan Sayed
Prof of Wastewater Treatment Technology

0100295313 -01009978026 موبايل
33 شارع التحرير - النقي

33335496 : تليفون
e-mail: enas_aboutaleb@yahoo.com

Chipsy October Industrial WWT & Reuse Plant

- Industrial wastewater treatment plant upgrade is designed to accommodate the increase in organic load due to increasing water saving.
- The plant will produce water with superior quality exceeds Egyptian standards for reuse in irrigation.
- Capacity: 540 m³/day
- Recovery ratio: Up to 70%



Chipsy October Industrial WWT & Reuse Plant

Ministry of Health & Population
Preventive Sector
Central Health Laboratories

الهيئة العامة للصحة العامة
إدارة المراكز المركزية للمعامل
قسم المياه

نتيجة فحص عينة مياه لبعض المكونات

رقم العنبر : 1060531
رقم الملف :
تاريخ التحليل : 2022-11-24

الموقع :
مكان أخذ العينة :
تاريخ الاستلام :

ملل mg/L الفحص الكمي

النتيجة	الفحص	الحد المسموح به
500	SiO2	0.5
20.83	CaCO3	0.2
20.83	CaCO3	45
250	CaCO3	5
350	CaCO3	0.8
150	CaCO3	250
28	CaCO3	200
17	CaCO3	17
5	CaCO3	5
2	CaCO3	2
1000	CaCO3	0.3
34.16	HCO3	0.4

ملل mg/L الفحص المعادن الثقيلة

النتيجة	الفحص	الحد المسموح به
0.001	Pb	0.003
0.2	Cd	0.002
2	Zn	3
2.4	AS	0.003

ملل mg/L الفحص

النتيجة	الفحص	الحد المسموح به
6.5	الرقم الهيدروجيني	7.5
78.0	التوصيل الكهربائي	1N.T.U

ملحق إدارة الكيمياء
د. محمد عبد الستار

Page 1 of 1
d/rnarwa abd el fatah

El Sheikh Rehan Street - Abdien Cairo, Egypt 19 19
06-12-2022 13:32

Final stage treated water sample analysis from NRC & MOH

National Research Centre
Analysis and consultation unit
Domain of Evaluation and
Remediation of Hazardous Solid
Wastes

المركز القومي للبحوث
وحدة التحليل والاستشارات
المجال الاستشاري لتقييم ومعالجة المخلفات
الصلبة الخطرة

نتائج تحليل العينات الواردة من شركة بيوريكم لصالح شركة شيبسي

Date: 23/11/2022

Parameters	Unit	Results	Ministerial*** Decree 458/2007
pH	—	6.49	6.5-8.5
Turbidity	NTU	0.45	1
Color	Co/Pt	Colorless	Colorless
Odor	—	Odourless	Odourless
Total dissolved solids	mg/L	58.1	1000
Total hardness	mg/L	3.5	500
Calcium hardness	mg/L	2.75	350
Magnesium hardness	mg/L	0.75	150
Ammonia	mg/L	N.D	0.5
Chloride	mg/L	3.1	250
Fluoride	mg/L	0.12	0.8
Sulfate	mg/L	2.25	250
Nitrite	mg/L	N.D	0.2
Nitrate	mg/L	0.8	45
Sodium	mg/L	7.75	200
Cyanide	mg/L	<0.001	0.05
Iron	mg/L	0.06	0.3
Manganese	mg/L	<0.01	0.4
Zinc	mg/L	<0.001	3
Copper	mg/L	<0.01	2
Aluminum	mg/L	0.03	0.2

*The sample was collected by the authorized person from the Company
**N.D: Not Detected
*** For Standard limits of drinking water

Prof. Dr. Enas Abou Taleb

Enas Abou Taleb

Prof of Wastewater Treatment

Technology and Environmental Studies

Head of Domain
Prof. Dr. Hanan Sayed
Prof of Wastewater Treatment Technology

هاتف : ٢٣٣٢٥٤٩٦
موبايل : ٠١٠٠٩٩٧٨٠٢٦
e-mail: enas_aboutaleb@yahoo.com
شارع التحرير - الدقي

Chipsy Obour Industrial WWT & Reuse Plant

- Industrial wastewater treatment plant upgrade is designed to accommodate the increase in organic load due to increasing water saving.
- The plant will produce water with superior quality exceeds Egyptian standards for reuse in irrigation.
- Capacity: 540 m³/day
- Recovery ratio: Up to 70%

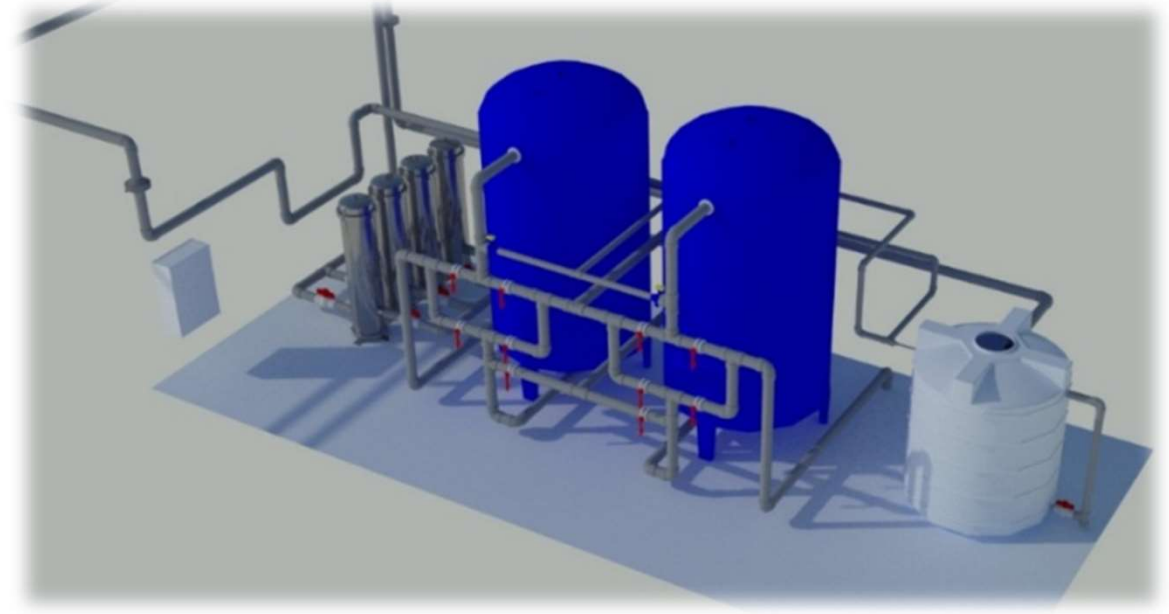


Pepsi Menya Industrial WWT & Reuse Plant

- The retrofit of the IWWTP with capacity 120 m³/d re-designed based on advanced MBR biological treatment and the introduced to heavy duty RO plant in order to produce 85 m³/day of ultra pure water ready to be reused in the process
- Capacity: 85 m³/day



Golden Oil Water Treatment and Reuse Plant

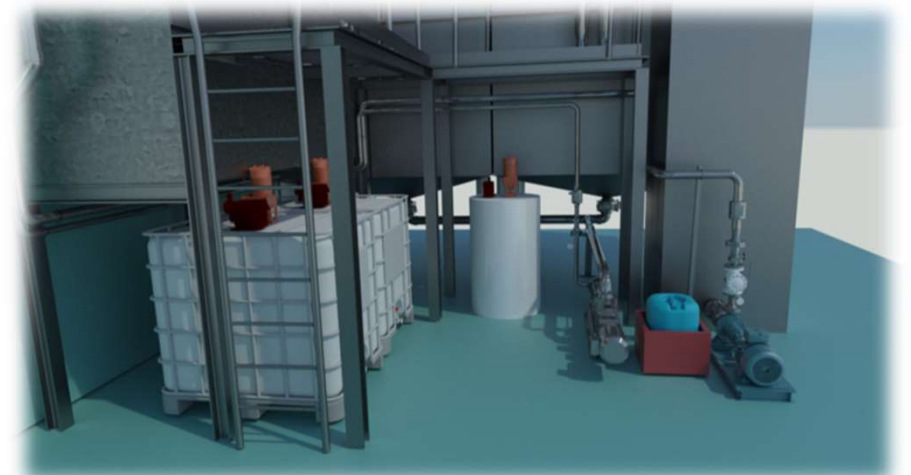


- Water treatment , Reuse and Boosting system
- Capacity: 1,920 m³/d

Pepsico Fritolay Pakistan Industrial Wastewater Treatment And Reuse Plant

Subcontractor to NALCO Water

- Industrial wastewater treatment plant producing treated water suitable for reuse
- Capacity: 360 m³/day
- Removal Efficiency: 90% Achieved



Spring Beverage SBR Industrial Wastewater Treatment Plant

- Industrial wastewater treatment plant producing treated water suitable for disposal to governmental network
- Capacity: 60 m³/day
- Technology Used: SBR



Paste & Juice Industrial Wastewater Treatment Plant

- Industrial wastewater treatment plant for paste and juice factory is designed to produce water with quality matching the Egyptian standards for wastewater discharge as well as prepare for future reuse opportunities.

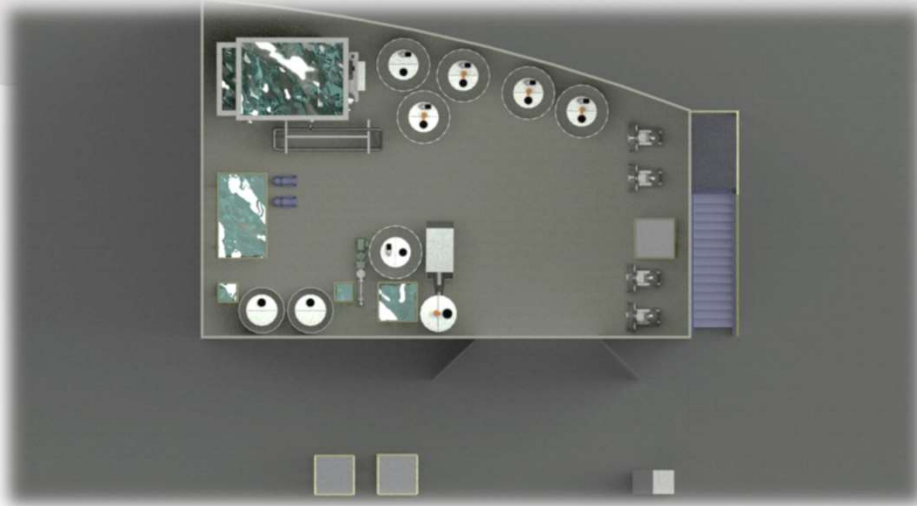
- Capacity: 2,500 m³/day



Symrise Advanced Industrial Wastewater Treatment Plant

- Capacity: 60 m³/d

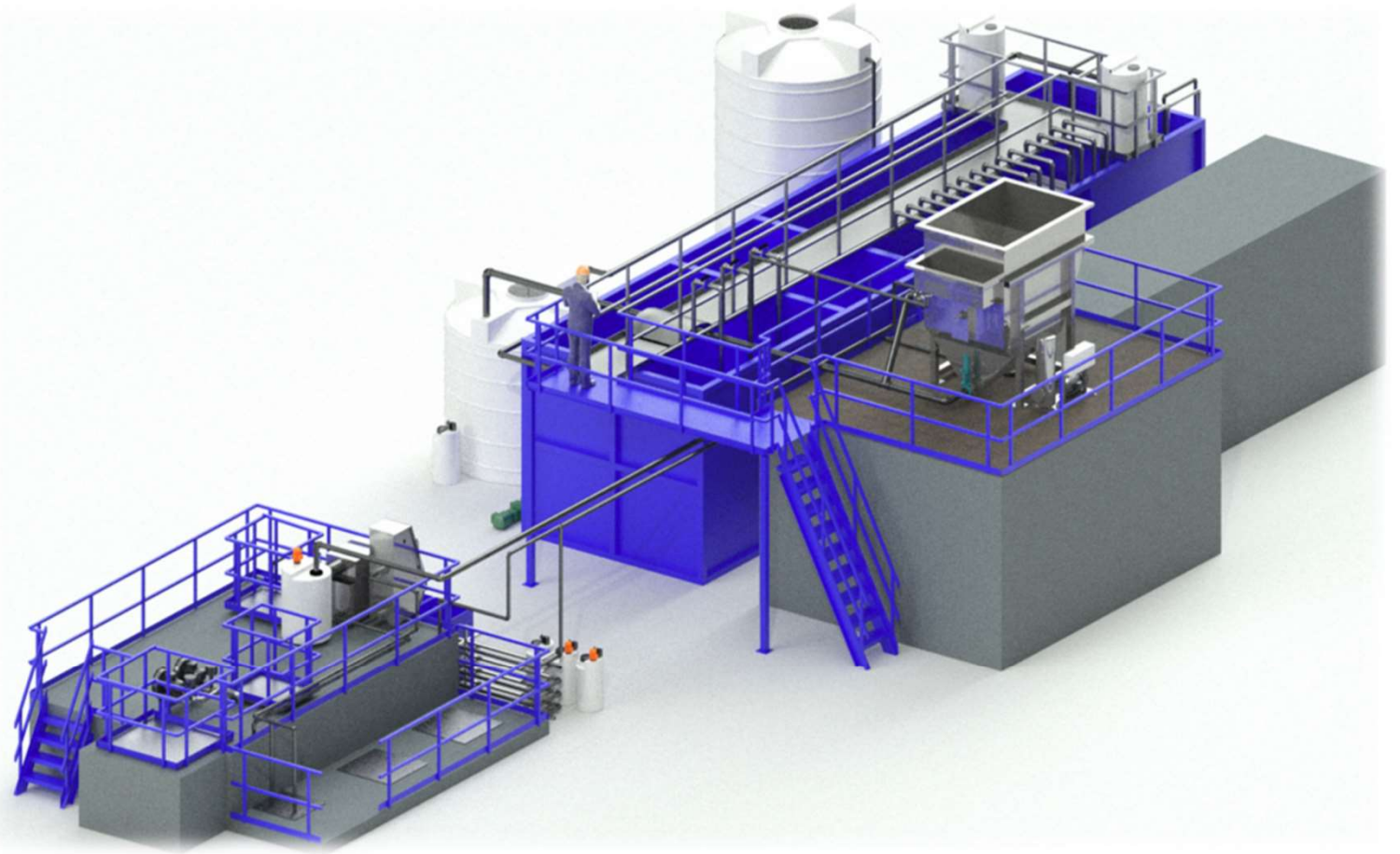
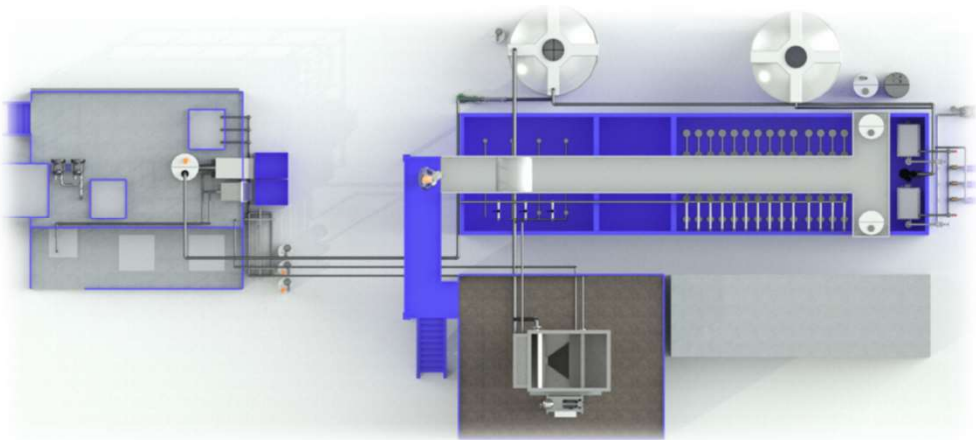
-Technology: UF-MBR



MARS-FBL Advanced Industrial WWTP

- Capacity: 120 m³/d

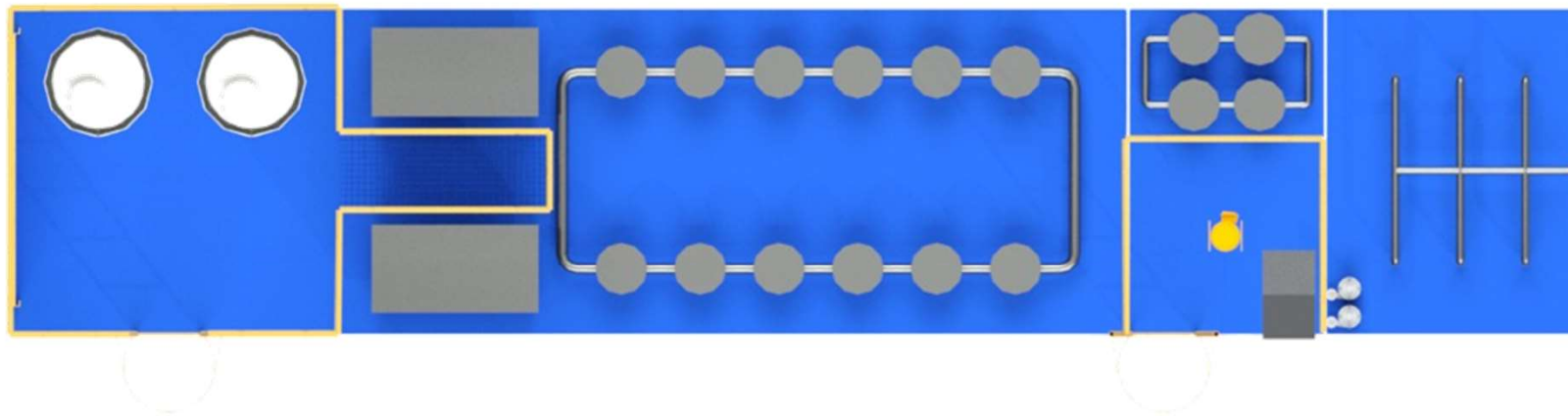
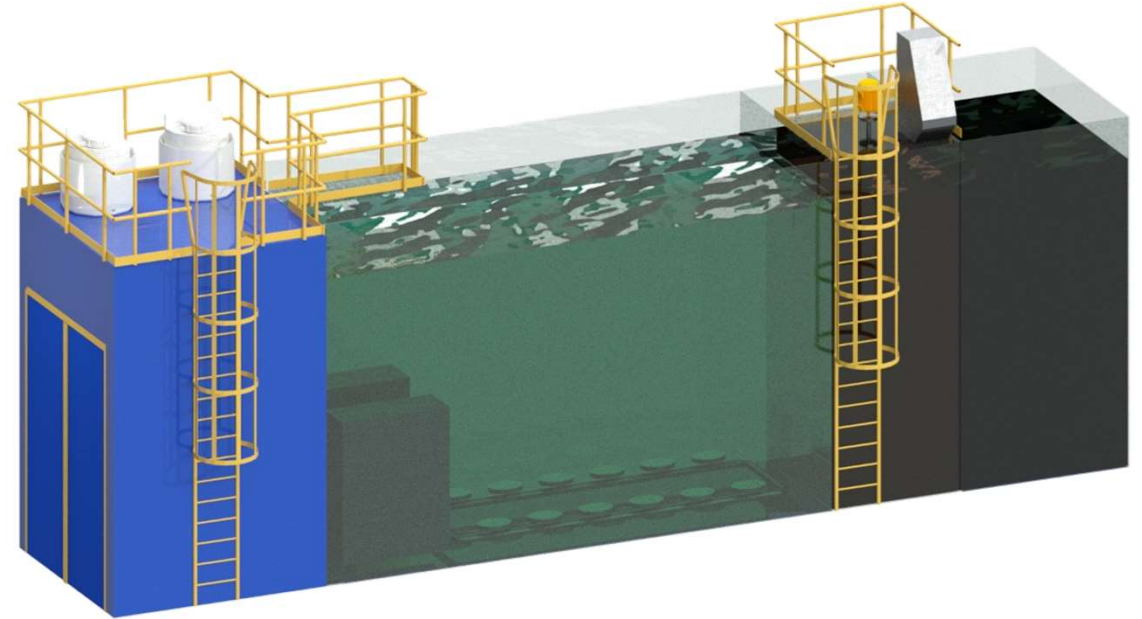
- Revamping and upgrading the existing IWWTP using 2 Stage biological Treatment system (MBBR – MBR)



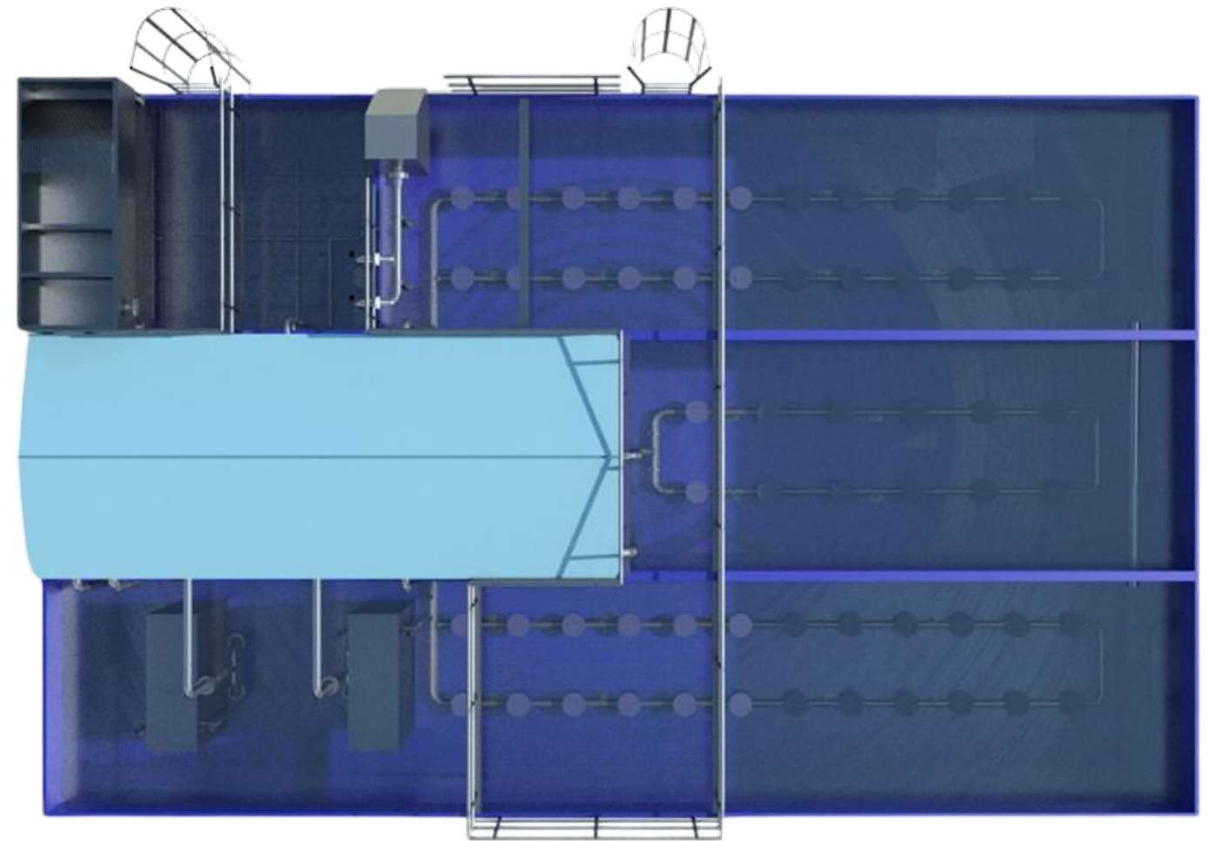
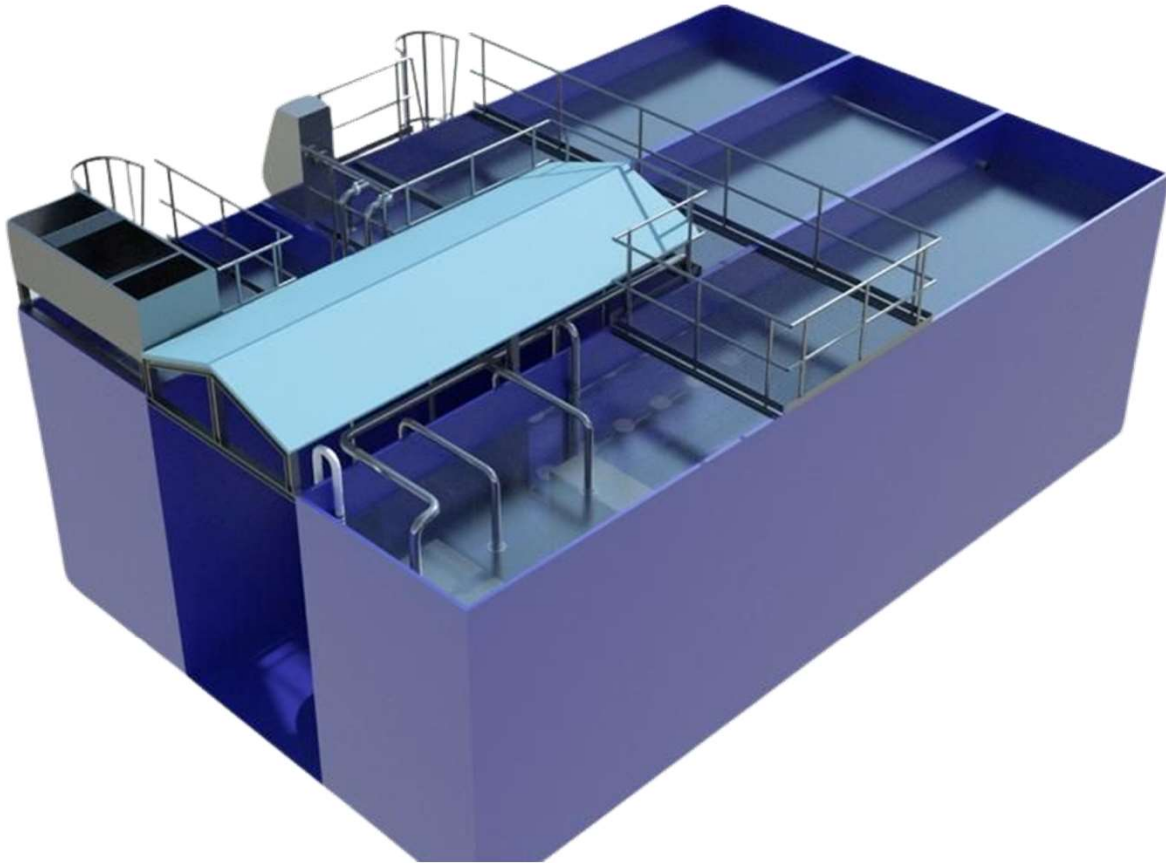


Compact Sewage Treatment Plants

Compact Container shaped 150-200 CMD Plants



Compact Container shaped 250-1000 CMD Plants





Water Treatment, RO and R2RO Plants

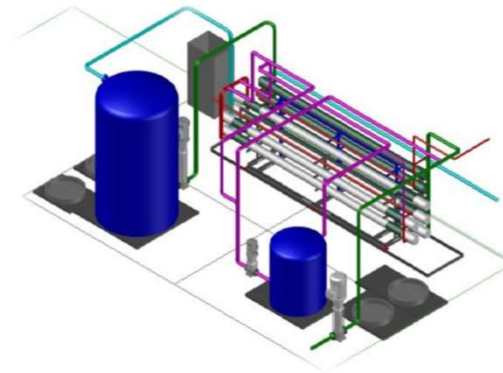
Water Treatment, RO and R2RO Plants

- ✓ **Tailor-made designs & systems according to specific case requirements.**
- ✓ **Successful projects with outstanding sustainable goals.**
- ✓ **In the following slides, a glimpse of our Water Treatment, RO and R2RO Projects will be shown**

Cargill New DPRO WTP & Revamping Existing WTP

Subcontractor to NALCO Water

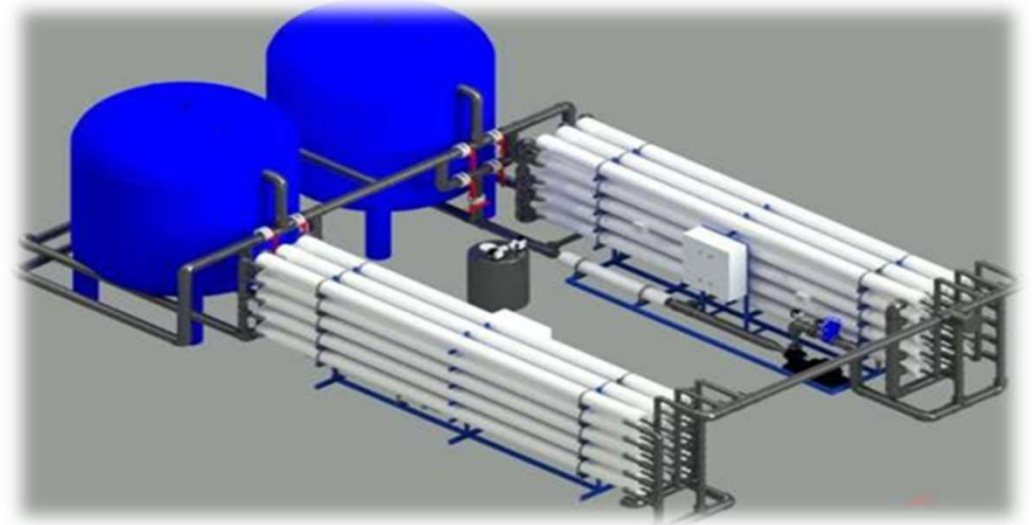
- Replacement of existing pretreatment system with Two ultrafiltration modules and Design, commissioning & startup of New Double Pass RO WTP.
- Capacity: 3,360 m³/day Ultrafiltration system, 600 m³/day RO system



MIDWATER RO Water Treatment Plant

Turn-key RO Water treatment plant

- Water type: Brackish surface conventional
- Capacity: 3,600 m³/day
- Recovery: up to 75%



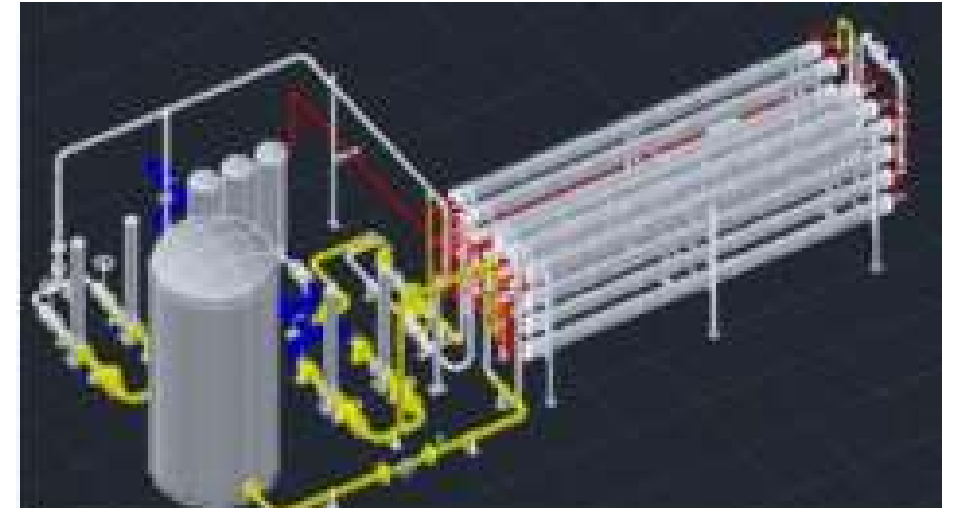
Aquafina R2RO Water Recycling Treatment Plant

- The plant is designed to collect reject water from 2 existing RO plants with different capacities and reuse it after treatment for beverage manufacturing lines.
- Capacity: 432 m³/day



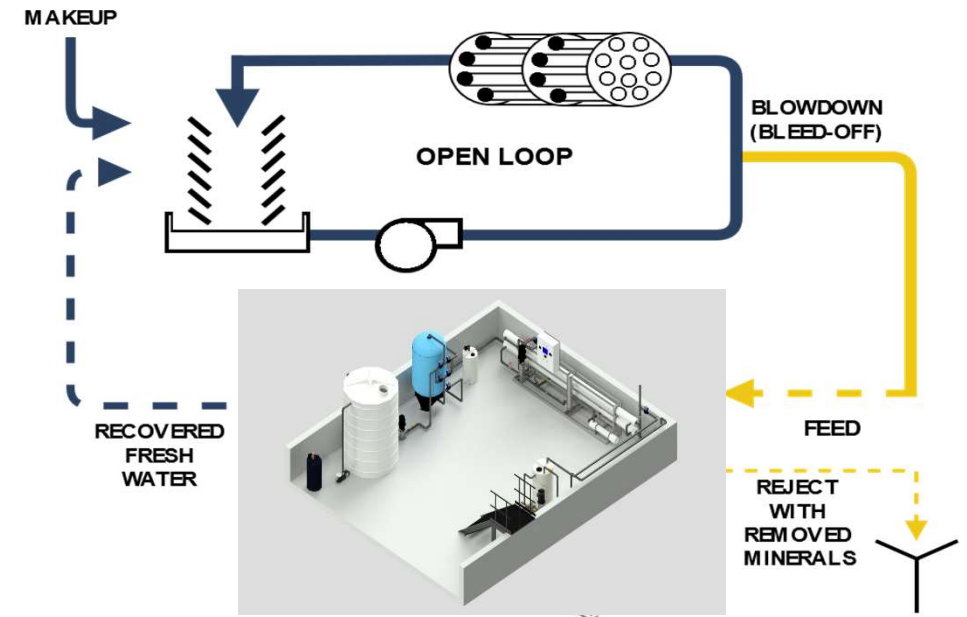
ADITYA BIRLA (Alex Carbon Black) ZLDA Project

- Phase I: Double pass RO (DPRO) for High pressure Boiler Demineralized water (1,200 m³/day)
- Phase II: R2RO treatment Plant to treat DPRO system reject water to be reused in cooling tower (650 m³/day).
- Phase III: Cooling tower bleed water recycling pre-treatment system (432 m³/day)
- Total effluent water now is (192 m³/day) instead of (1,200 m³/day) before project .



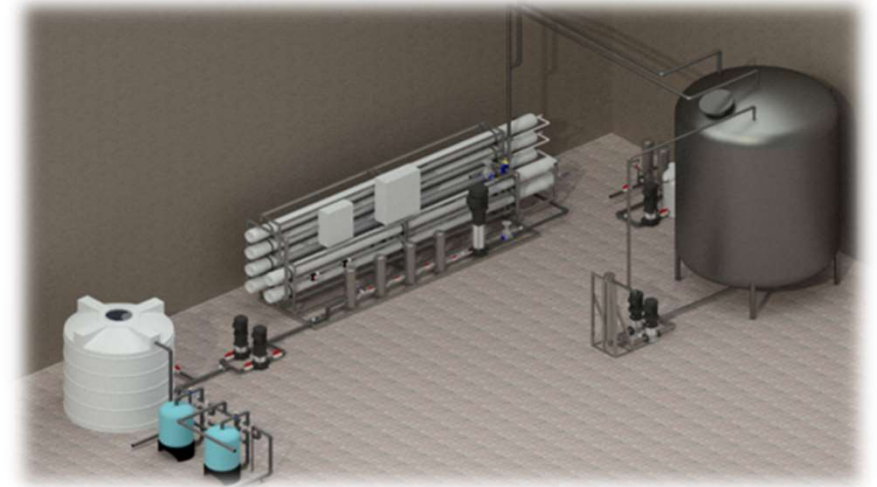
Mondelez BEA Cooling Tower Blowdown Reuse Project

- Capacity: 200-240 m³/day
- Recovery: up to 75%
- Produced water will be used as make up water for boiler to reduce boiler blow down, chemical consumption and fuel consumption



Koning Food Industries RO Water Treatment Plant

- RO water treatment system is designed to treat city water to be used in different industrial purposes
- Raw Water Flow Rate: 888 m³/day
- Product water: 720 m³/day
- Total recovery ratio up to 81%



Mars Egypt Water Quality Improvement Project (WQIP)

- City Water Feed Line Chlorination and Monitoring system, VS1 New WTP, Circulation & Disinfection Loop, and VS2 Upgraded WTP, Circulation & Disinfection Loop
- Supply and Install Zero Dead Leg Valves for Zero bacterial contamination in all loops
- Capacity:
 - 240 m³/d Water circulating system for VS1.
 - 62.5 m³/d Water circulating system for VS2.
- Piping: 1,500 meters



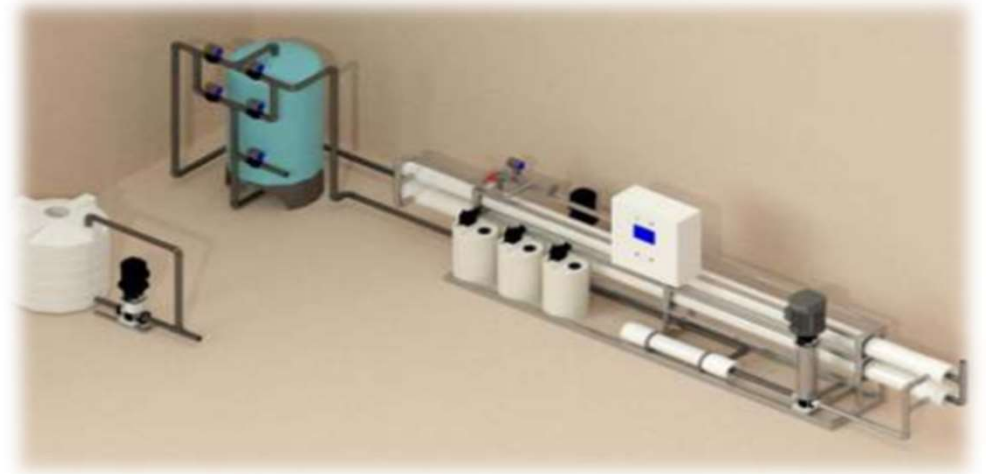
MARS-FBL Soft Water Treatment Plant

- Capacity: 384 m³/d



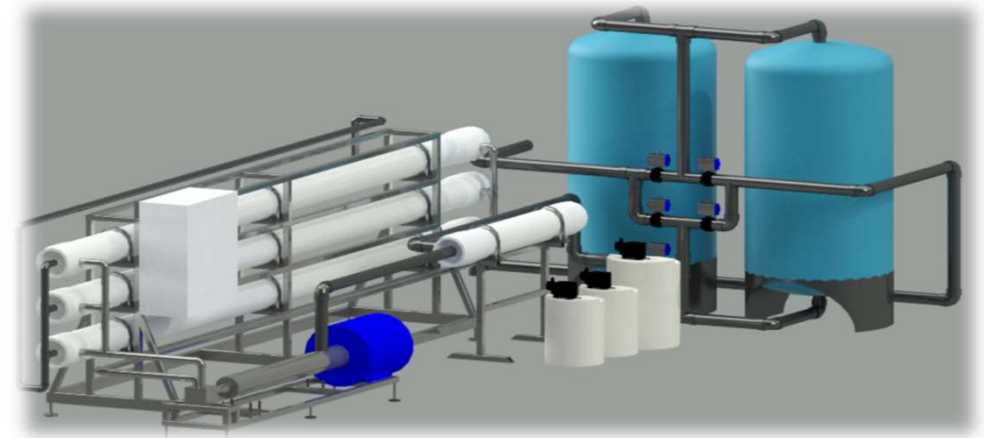
Golden Beach Brackish Water RO Treatment Plant

- **Water type: Near Red Sea Brackish Well Non-Fouling**
- **Capacity: 150 m³/day**
- **Recovery: up to 55%**
- **Fully controlled compact system with small footprint**
- **High technology RO membrane elements for low differential pressure.**



Golden Beach Sea Water RO Treatment Plant

- **Water type: Sea Water**
- **Capacity: 225 m³/day**
- **Recovery: up to 45%**
- **Fully controlled compact system with small footprint**
- **High technology RO membrane elements for Sea Water Applications.**

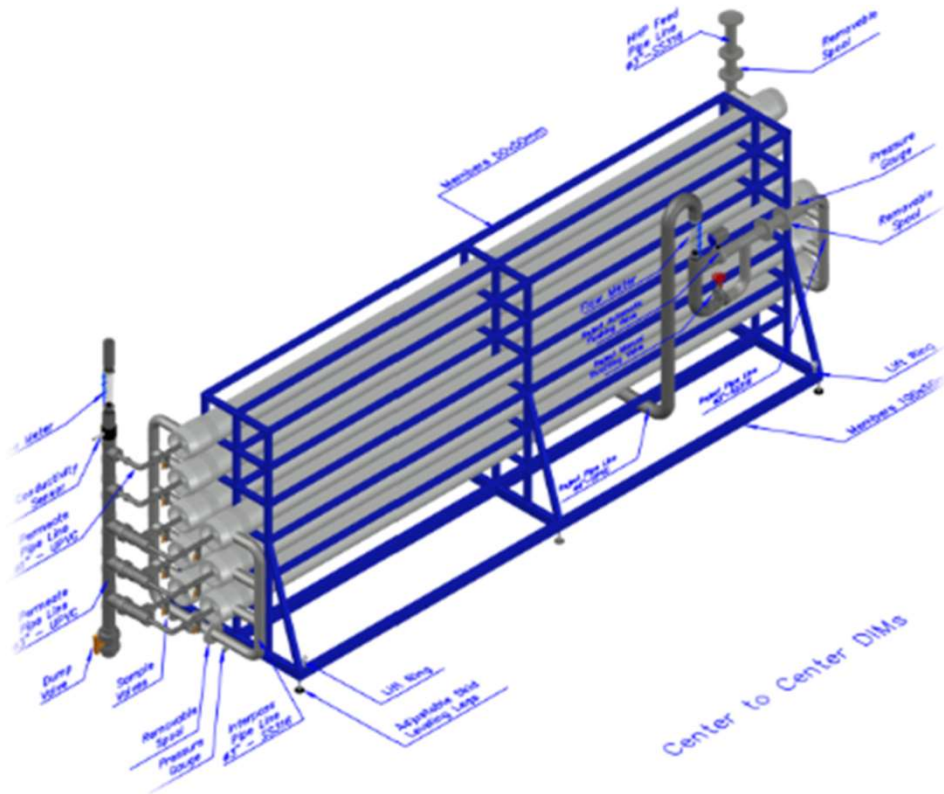


Sphinx Glass City Water RO Treatment Plant

- RO water treatment system designed to treat city water to be used in different industrial purposes.
- Raw Water Flow Rate: 528 m³/day.
- Product water: 480 m³/day.
- Total recovery ratio up to 90%.



Birla Carbon Egypt RO Skid



RO Skid replacement with a new Skid and Piping



PuriChem
Integrated Water Systems

Other Water Treatment Projects

Demineralization Water Treatment Plant

- Replacement of existing ion exchange demineralization unit with the new RO water treatment system
- Closed-cycle (circulating) Permeate water disinfection and conductivity monitoring system.
- Capacity: 240 m³/d



Pepsico El-Menya R2RO Water Treatment Plant

- The plant is designed to collect reject water from existing RO plant, treated it and directed it to raw water tank ready for reuse.
- Plant over all capacity up to 50%
- Capacity: 240 m³/day

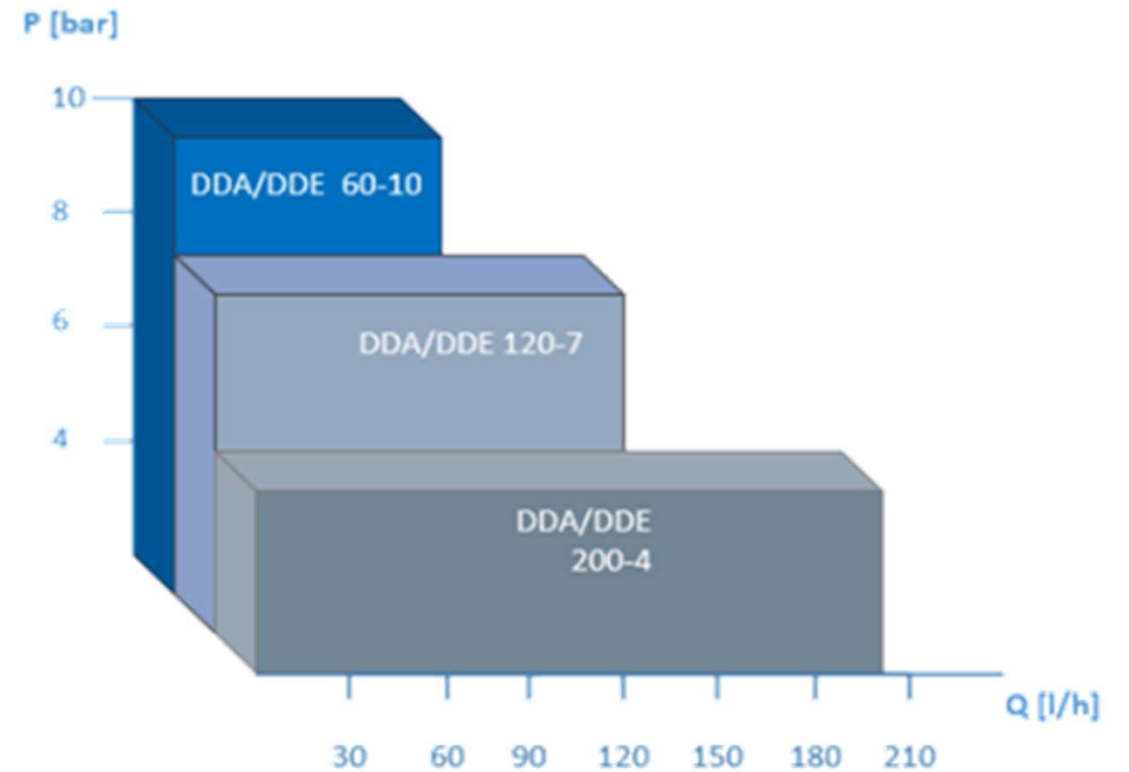
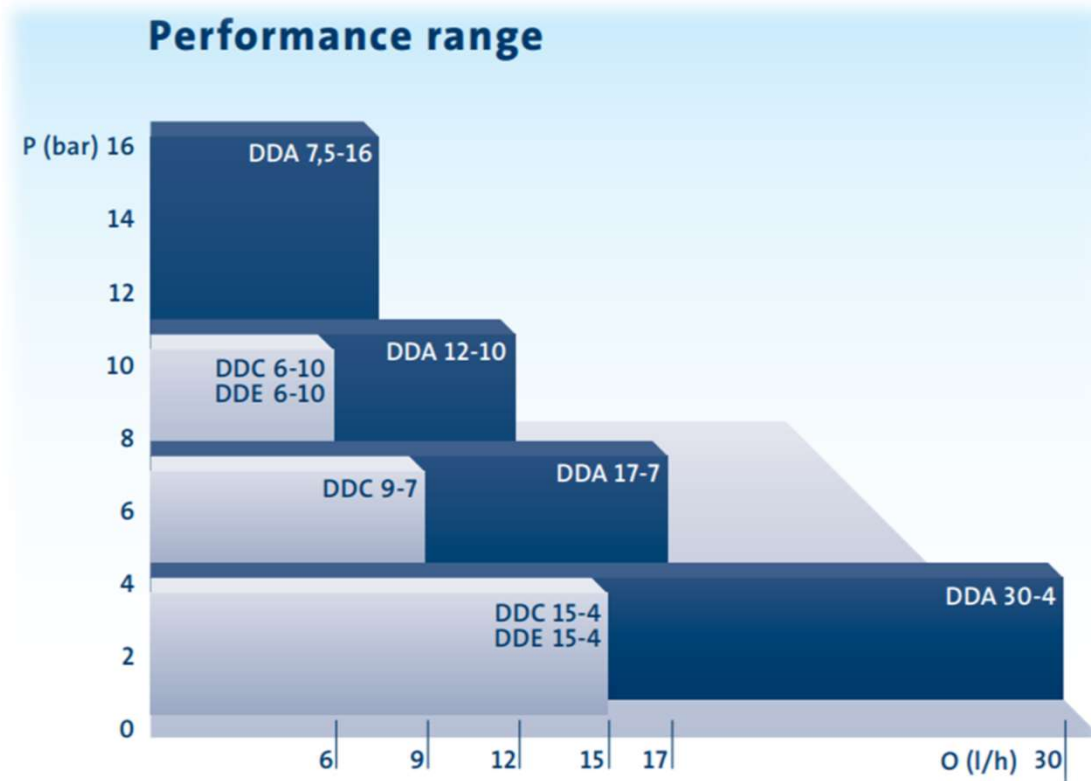




Dosing Solutions

Dosing Solutions

✓ PuriChem Offers a wide range of Dosing Systems (6 ml/h – 200 l/h)



Dosing Solutions

SMART Digital Monitoring and Dosing can be used in a wide range of:

- Disinfection
- pH adjustment
- Chemical dosing
- Cleaning-in-place
- Reverse osmosis
- Biocides
- Coagulation
- Precipitation/Flocculation
- Filtration

Dosing Solutions

- Custom-designed systems tailored to customer specific needs and applications
- Dosing Stations (Chemicals Storage and Dosing)
- Complete Dosing Skids



ABB Chemicals Dosing Skids

**Design and Fabrication of 16
chemicals dosing skids including
piping, fittings and all related
accessories for ABB**



Nalco High Pressure Dosing Skid

- Dosing Skid with Grundfos Simplex headed piston hydraulic diaphragm dosing pump
- Complete System with accessories as SS pulsation damper to even out pulsating flow & pressure.
- Control Box to connected to 2-step level switch to avoid dry running.
- Optimizing Relief Pressure with respect to process operating pressure.



SIDPEC Cooling Towers Multi-chemical Compact Dosing Skid

Client: Nalco

- Multiple Channels for dosing chemicals in limited spaces
- Ease of mobilization and relocation
- Junction Box for Pumps power



Saint Gobain Mirror Line Dosing System

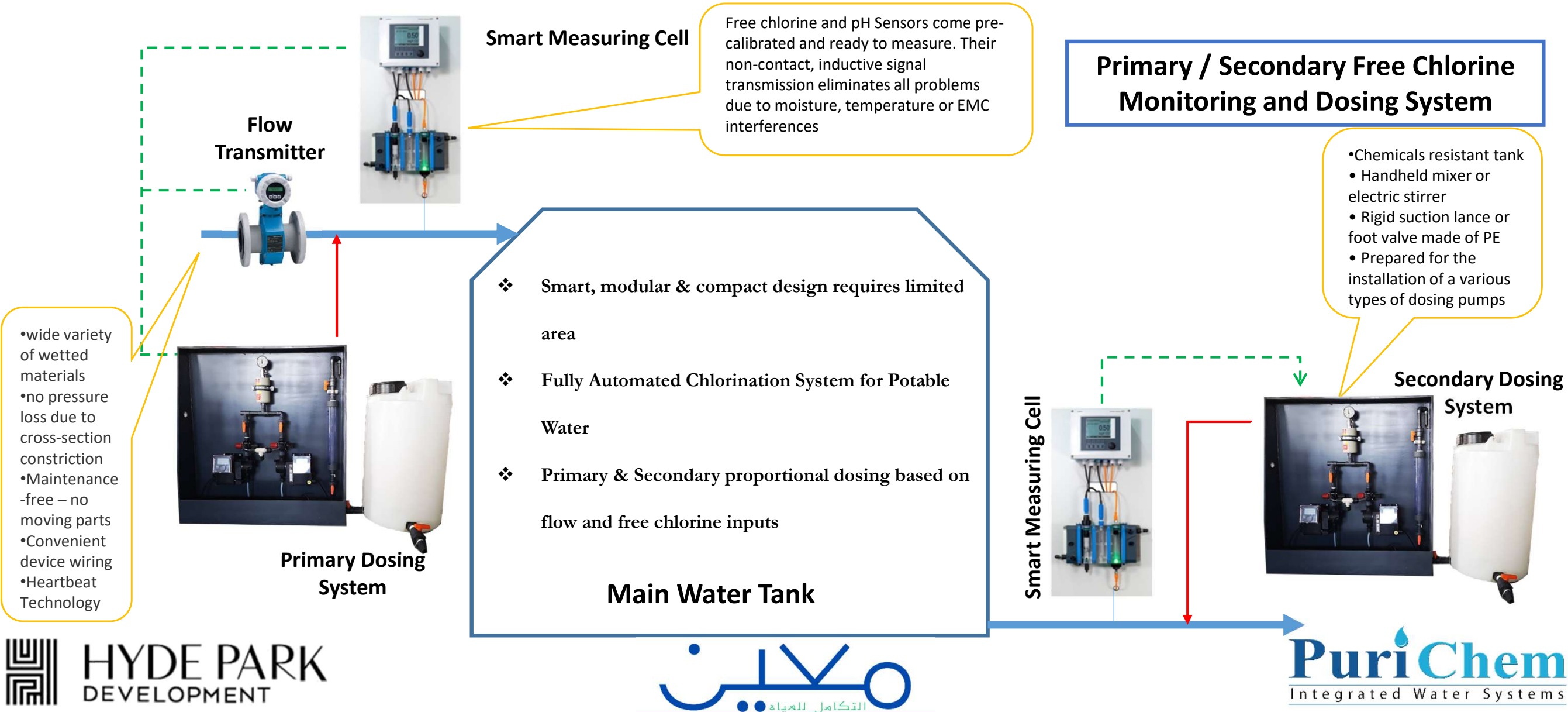
- 6 Automatic Dosing Skids for Chemicals used in silvering operation.
- Monitoring of Water Parameters as Pressure, Flow & Temperature.
- Monitoring of Water quality by means of conductivity measurement & control system





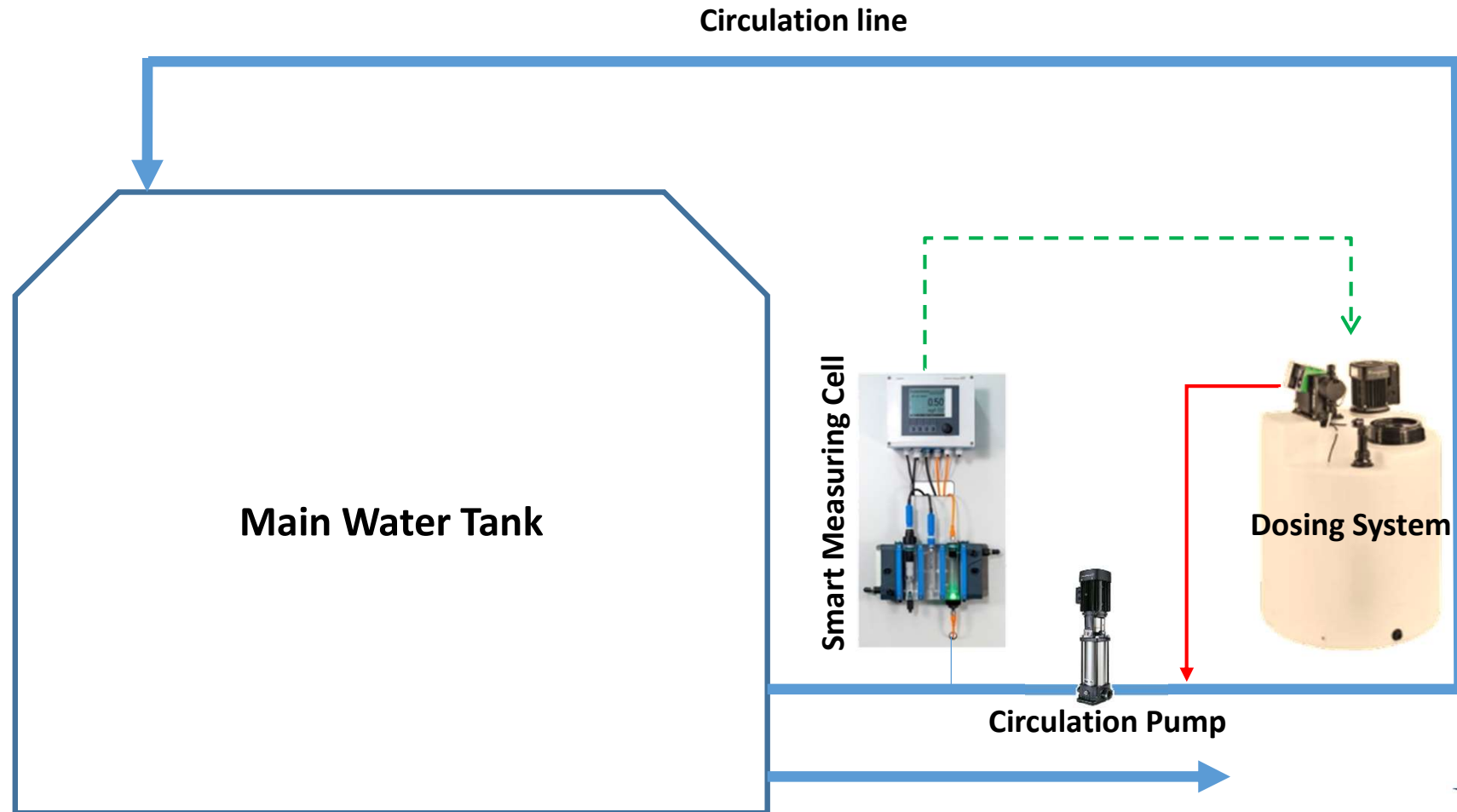
Chlorination and Disinfection

Hydepark Chlorination System



O-West Chlorination System

Circulation Based Free Chlorine
Monitoring and Dosing System





Official Business Partnership Certificates

Business Partnerships



Business Partnerships



1-1 Marunouchi 1-chome, Chiyoda-ku, Tokyo 100-8251, Japan



Reference No. MCC22047

Date: 22th March 2022

Authorized Distributor Certificate

Mitsubishi Chemical Corporation located in 1-1 Marunouchi 1-chome, Chiyoda-ku, Tokyo 100-8251, Japan, provides a wide range of hollow fiber membrane products "STERAPORE™" to serve a variety of industrial and municipal water treatment. Mitsubishi Chemical Corporation hereby confirms that the company

PuriChem Integrated Systems

located in 22 Syria Street - Roushdy, Alexandria, Egypt is our distributor for our products "STERAPORE™ hollow fiber membrane element and module for Membrane Bio-Reactors" in Egypt from 31st December 2020 to 31st December 2023, pursuant to the Distributorship Agreement of 31st December 2020 executed by the company and our company.



Kaitaro YOSHIMURA

Senior Manager

Membrane Business Section

Mitsubishi Chemical Corporation





Events and Appreciation Letters

Events

- ✓ As one of the market leaders, PuriChem contributed in various Water and Wastewater treatment events, introducing state-of-the-art products and solutions, gaining both national and international recognition .



Appreciation Letters

MARS

Certificate of Appreciation

To Whom It May Concern,


We, at **MARS EGYPT** would like to express our appreciation for the quality of service PuriChem team has provided to steer the implementation of the new water treatment plants project 2018 (in 6th October Giza-Egypt) to successful completion.

We present you this letter of appreciation as a token of our gratitude over an excellently engineered and commissioned system that achieved Mars aims and objectives while exceeding global quality standards.

PuriChem have demonstrated professionalism, gracious customer service and high level of detail and accountability in project execution in accordance with MARS overall project requirements and according to safety and environment Standards.

We wish you continued success in your endeavors, and looking forward to further cooperation with PuriChem in our upcoming projects.

Sincerely yours



Appreciation Letters



PEPSICO

التكامل للمياه



شيبسى للصناعات الغذائية ش.م.م

Appreciation Letter

We would like to express our gratitude to **PuriChem** for being such a co-operative supplier. We sincerely appreciate your responsiveness and the friendly business relationship we have had with your company.

Your staff has consistently made extra efforts to provide technical support and onsite services; assisting us to meet our quality limits in the wastewater treatment plant while reducing energy consumption and carbon footprint at the same time.

Hoping that the same spirit will continue in our future projects and that our association will go a long way creating pillars of success.

Plant Manager:

Mohamed Tantawi

Performance & Sustainability Manager:

Ramy ElMasry



H.Q.: 38 Mosaddak st., Dokki, P.O. Box: 27 El Mohandessin - Egypt
Tel.: 37610093 - 37610094 Fax: 37615646
Factories: *6th of October City : 4th Industrial Area
Tel.: 38330778 Fax: 38334970
* Assiut - Industrial Area - Abnoub
Tel.: 088/960080 - 960088 Fax: 088/960066

الإدارة: ٣٨ ش مصطفى - الدقي - ص.ب: ٢٧ للمهندسين - مصر
ت: ٣٧٦١٠٠٩٣ - ٣٧٦١٠٠٩٤ فاكس: ٣٧٦١٥٦٤٦
المصانع: * مدينة أكتوبر: المنطقة الصناعية الرابعة - قطعة رقم ١/٤
ت: ٣٨٣٣٠٧٧٨ فاكس: ٣٨٣٣٤٩٧٠
* أسيوط: المنطقة الصناعية - أبنوب
ت: ٠٨٨/٩٦٠٠٨٠ - ٩٦٠٠٨٨ فاكس: ٠٨٨/٩٦٠٠٦٦

PuriChem
Integrated Water Systems

Appreciation Letters



A blue ink signature of Shenouda Yakoub.

SHENOUDA YAKOUB
M&R LEAD, CTOR

BEST SUPPLIER AWARD

THIS IS TO CERTIFY THAT

PURICHEM

IS THE BEST SUPPLIER FOR 2019

FOR

HIGH EFFICIENCY REVERSE OSMOSIS(RO) DEMINERALIZATION SYSTEM

SEPTEMBER, 2019

Mondelēz
International
SNACKING MADE RIGHT

PuriChem
Integrated Water Systems

A blue ink signature of Abdallah Habib.

ABDALLAH HABIB
MANUFACTURING
DIRECTOR, TOR SITES

PuriChem
Integrated Water Systems



Thank you

ملايين
التكامل للمياه